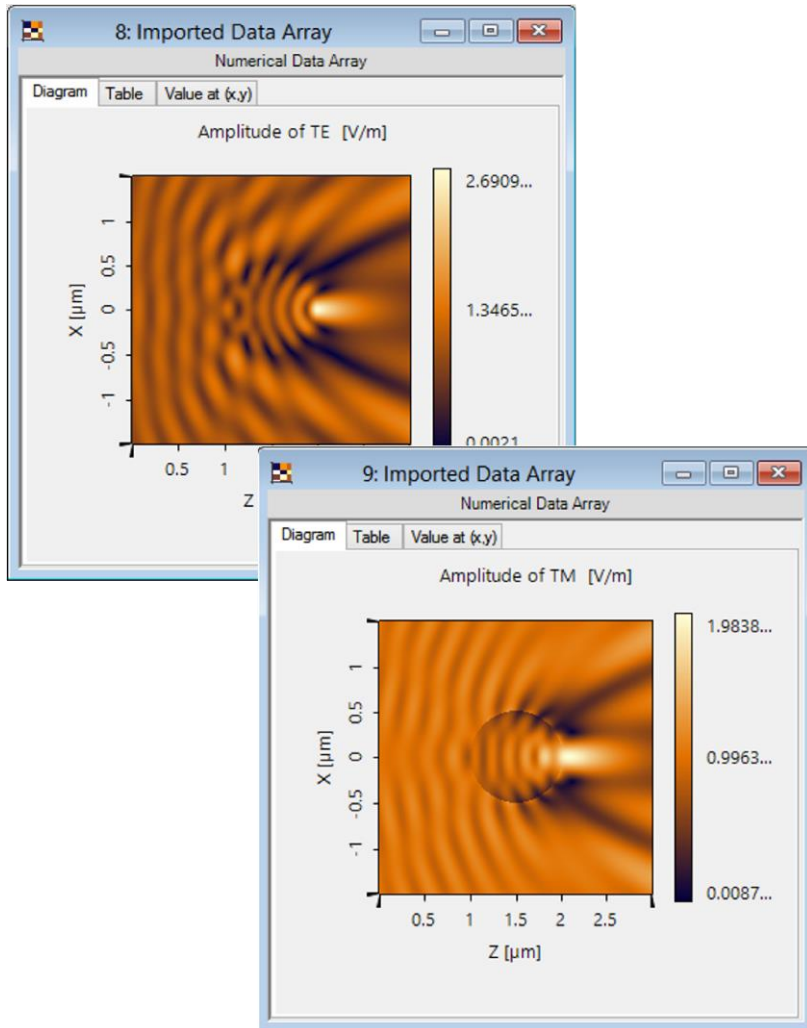


# **Data Array Import with Saved Settings**

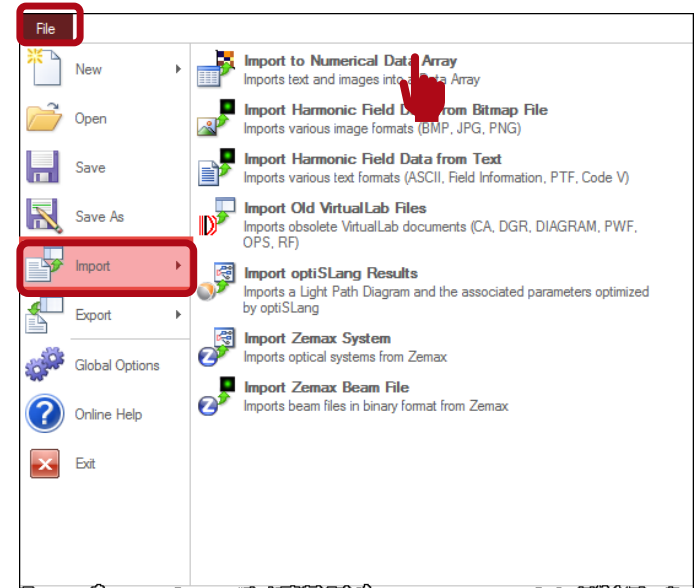
# Abstract



Data is often stored in the form of .txt, .csv, .bmp etc. VirtualLab Fusion supports to import these data forms and store them into Data Array. It is often the case that the engineer needs to import multiple Data Arrays which have similar settings, e.g. the sampling distance, the label of axis, the units, etc. VirtualLab Fusion supports to save the settings and load the settings for multiple Data Arrays.

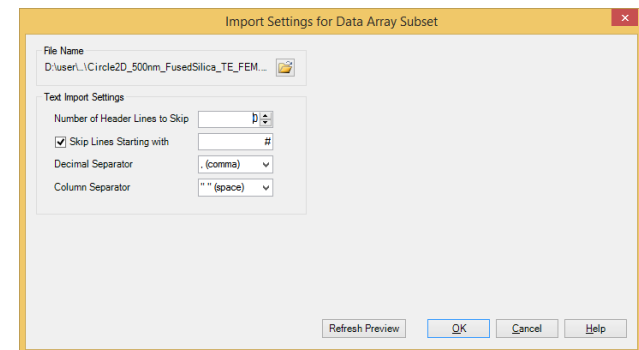
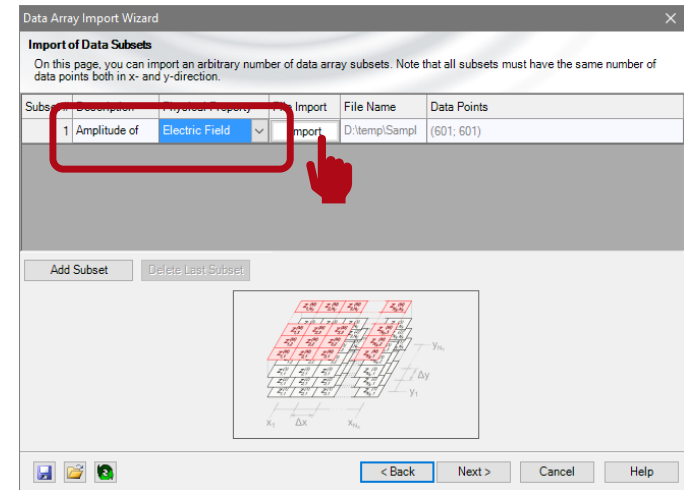
# Initialize Data Array Import Wizard

- Click *File*, click *Import* to choose *Import to Numerical Data Array*.
- Then the Data Array Import Wizard is shown.
- Click *Next*.



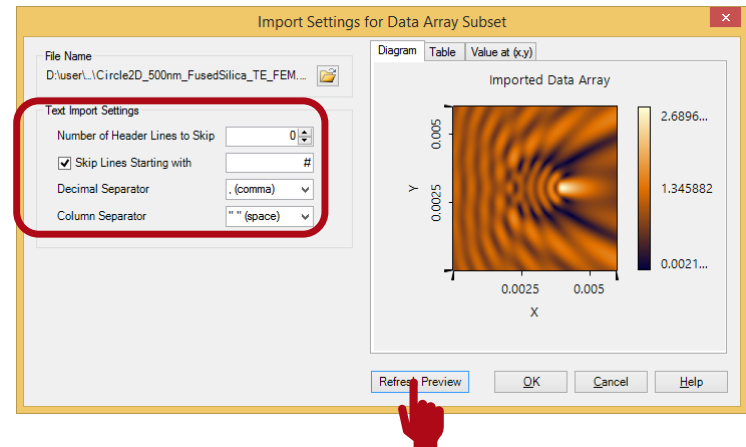
# Import Data Array

- We come to *Import of Data Subsets*.
- Fill the Description, e.g. Amplitude of TE.
- Choose Physical Property, e.g. Electric field.
- Click *Import* and choose the data file to import.
- After choosing the data file, then the Import Settings is shown.



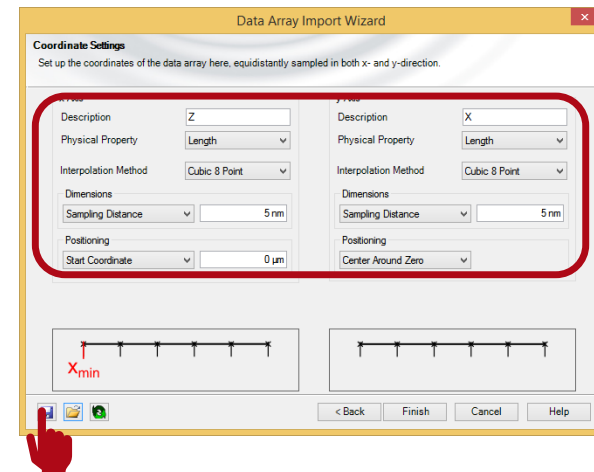
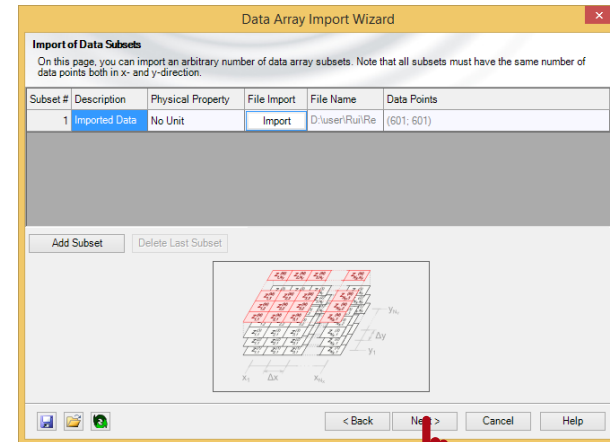
# Import Data Array

- Set the Text Import Settings according to the original data file, e.g. as shown in the figure.
- Click *Refresh Preview* to see the preview.
- Click OK to finish this part.



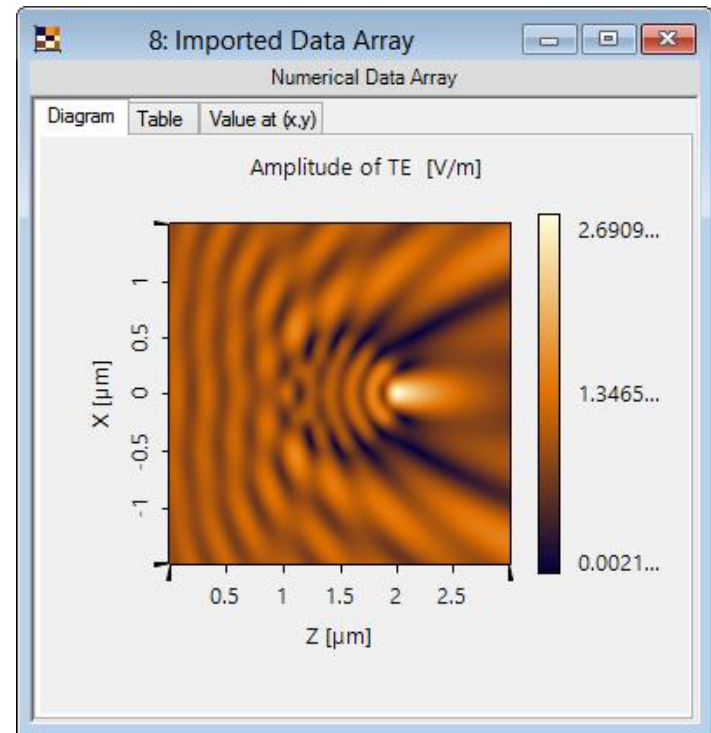
# Save Import Settings

- Click *Next* to go to the Coordinate Settings.
- Set all the Coordinate parameters according to the original file, e.g. as shown in the figure.
- Click *Save Import Settings* to save the *daImport* file.
- Click Finish.



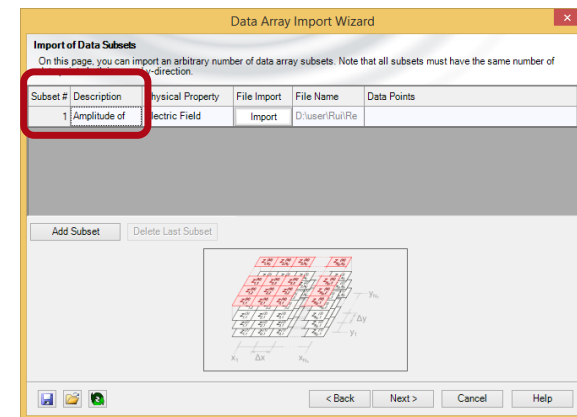
# Import Imported Data Array

- The imported data is shown.



# Import Data Array with Saved Setting

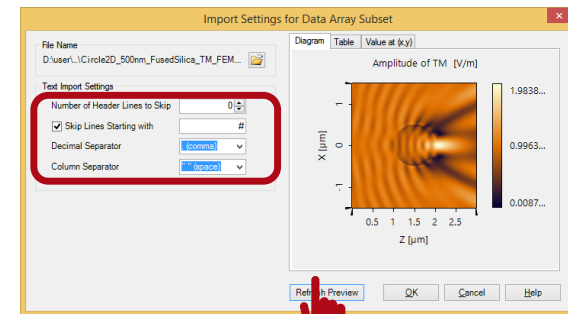
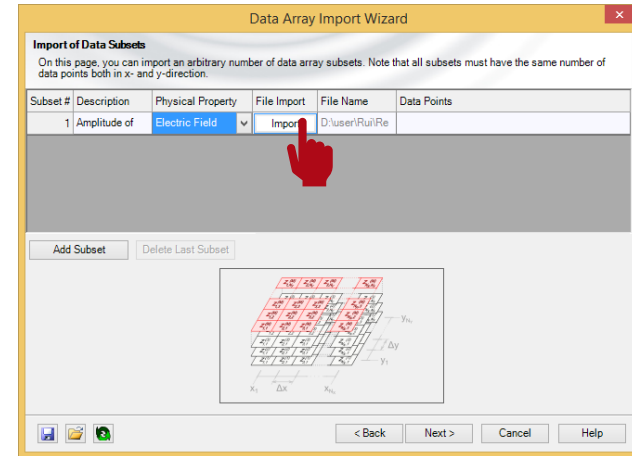
- Click *Load Import Settings* and load the saved *.daImport* file
- Click next to go to Import of Data Subsets.
- Change the Description if necessary, e.g. Amplitude of TM.





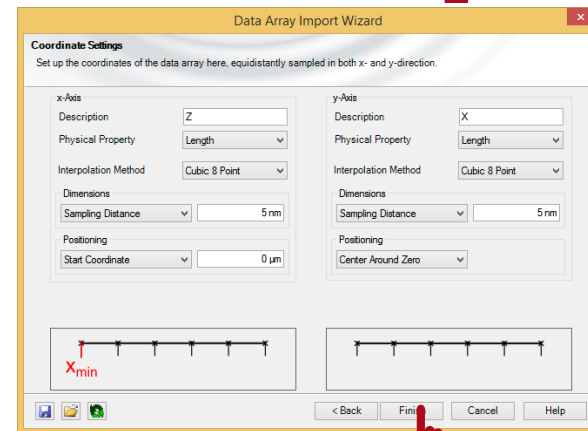
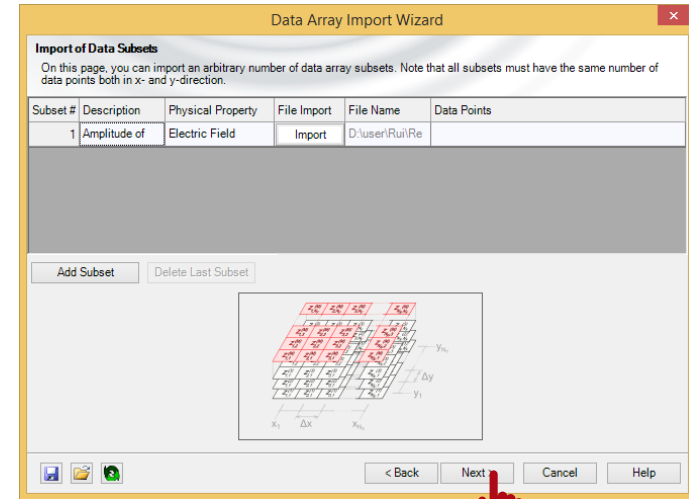
# Import Data Array with Saved Setting

- Click *Import* and choose another data file to import.
- After choosing the data file, then the Import Settings is shown.
- The saved settings are already there.
- Click *Refresh Preview* to see the preview.
- Click OK to finish this part.



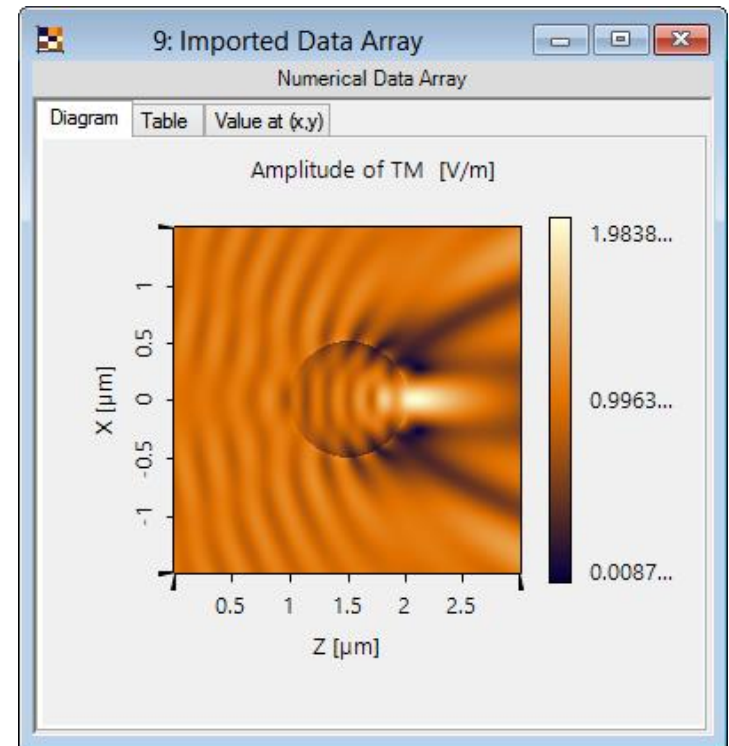
# Import Data Array with Saved Setting

- Click next to go to Coordinate Settings.
- The parameters are already there as saved.
- Click Finish.



# View Imported Data Array

- The imported data is shown.



# Document Information

---

title	Data Array Import with Saved Settings
version	1.0
VL version used for simulations	7.0.3.4
category	Feature Use Case

---