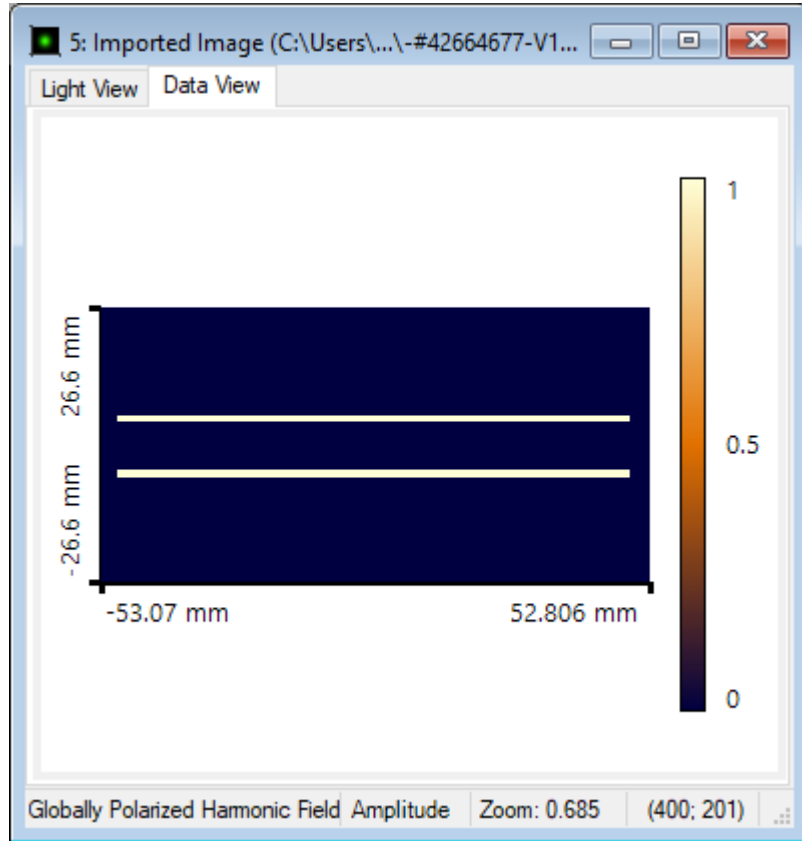


Bitmap File Import into VirtualLab Fusion

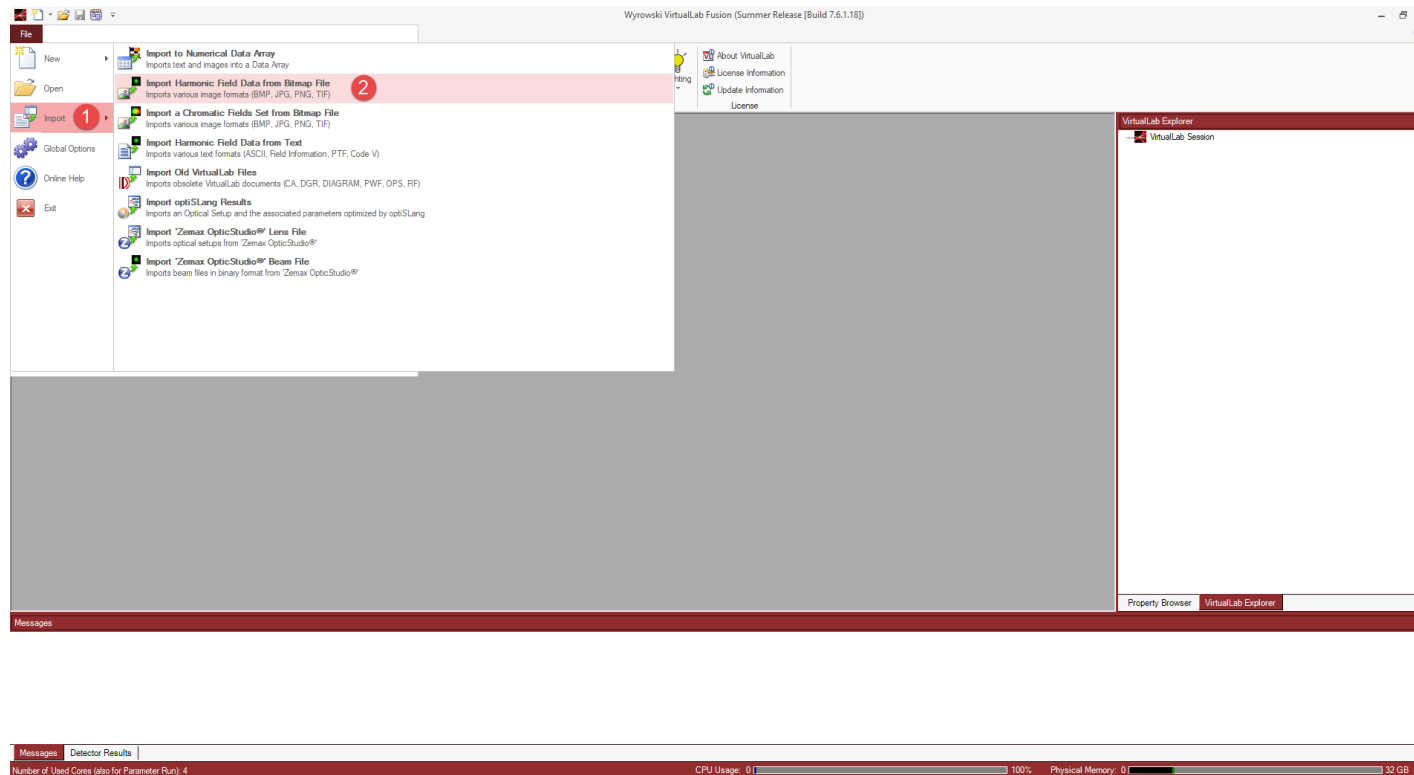
Abstract



In this demo we show how to import bitmap files into VirtualLab Fusion.

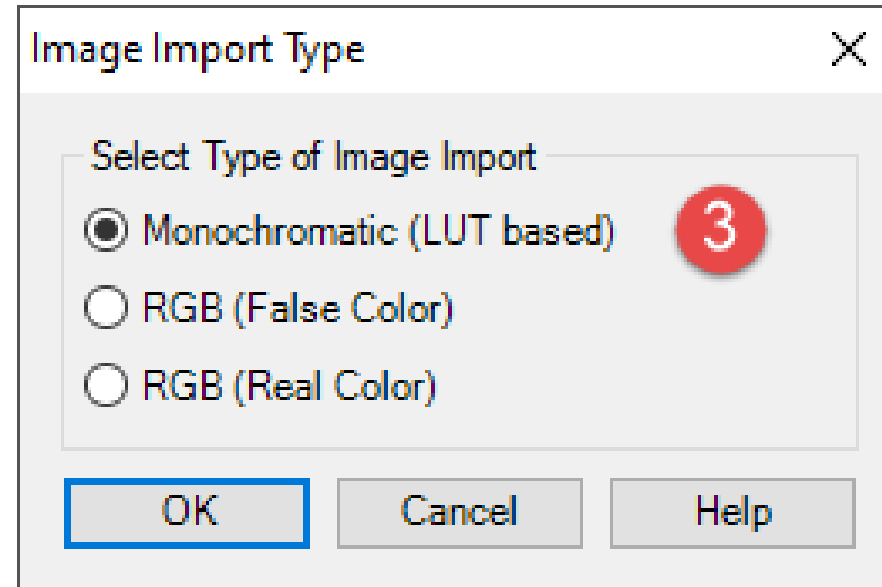
Instructions

- At the beginning, open VirtualLab fusion.
- Click on “Files“ tab. In this list, you have “Import“ option. Please move your mouse cursor on the small triangle next to it as shown below:



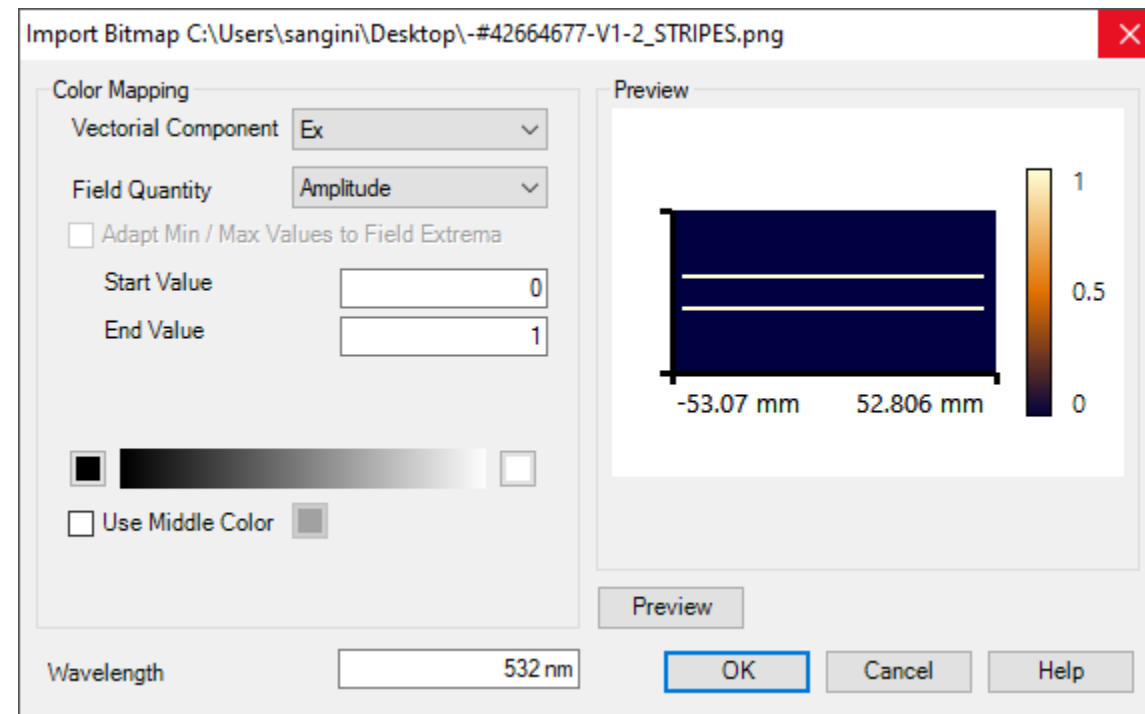
Instructions

- For the next step, select your Bitmap file via browse window. You can import .bmp, .jpg, .jpeg, .png, .tif, .tiff files.
- After selecting the relative file, a new window pops up as shown below:
- You are able to choose the type of your importing image.



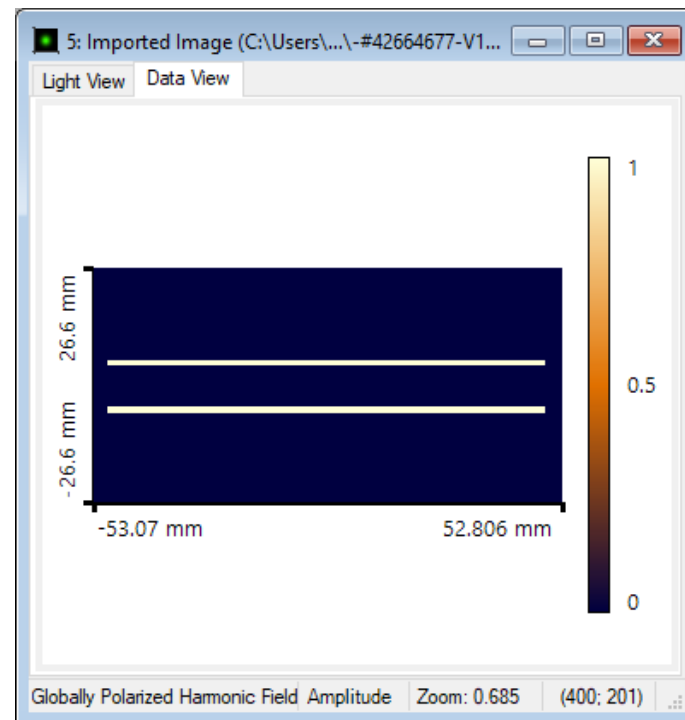
Instructions

- At this step, VirtualLab Fusion provides you with several options such as choosing the desired wavelength, value range, vectorial component you are building, and its quantity as shown below:



Instructions

- At final step, you will have your image file imported as a harmonic field data as shown below:



Document Information

title	Bitmap File Import into VirtualLab Fusion
document code	Demo.0017
version	1.0
VL version used for simulations	
category	Demo
further reading	
